

**THE TOWN OF ST. STEPHEN**

**BY-LAW NO. T-6**

**A BY-LAW TO STOP UP AND CLOSE  
PORTIONS OF PROGRESS DRIVE AND FUTURE STREET**

**BE IT ENACTED by the Council of the Town of St. Stephen as follows:**

All those certain portions of Progress Drive and Future Street, so called, in the Town of St. Stephen, in the County of Charlotte, hereinafter bounded and described, are hereby permanently stopped up and closed and shall no longer be a public thoroughfare:

**Parcel "A"**

Beginning at the south west corner of the Tidal Health Solutions Ltd. Property PID No. 15151004, being a calculated point number 1334 on a Plan of Survey showing Portions of a Public Street to be Stopped Up, prepared by Murphy Surveys (1990) Ltd. and dated April 15, 2019, a reduced copy of which is being hereto attached; thence on a New Brunswick Grid Azimuth 138 degrees 05 minutes 05 seconds a distance of 84.974 metres to a point number 1335 on said plan; thence 227 degrees 33 minutes 15 seconds a distance of 20.119 metres to a point number 1336 on said plan; thence 318 degrees 06 minutes 31 seconds a distance of 84.974 metres to a point number 2032 on said plan; thence 47 degrees 33 minutes 17 seconds a distance of 20.083 metres to the place of Beginning and containing 1708 square metres and being shown as Parcel "A" on said Plan.

**Parcel "B"**

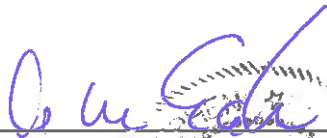
Beginning at the north west corner of the Tidal Health Solutions Ltd. Property PID No. 15148445, being a calculated point number 2060 on a Plan of Survey showing Portions of a Public Street to be Stopped Up, prepared by Murphy Surveys (1990) Ltd. and dated April 15, 2019, a reduced copy of which is being hereto attached; thence on a New Brunswick Grid Azimuth 138 degrees 07 minutes 18 seconds a distance of 83.520 metres to a point number 1337 on said plan; thence 38 degrees 50 minutes 06 seconds a distance of 20.385 metres to a point number 1338 on said plan; thence 318 degrees 07 minutes 17 seconds a distance of 80.430 metres to a point number 1339 on said plan; thence 47 degrees 33 minutes 16 seconds a distance of 20.117 metres to the Place of Beginning and containing an area of 1649 square metres and being shown as Parcel "B" on said Plan.


**IN WITNESS WHEREOF** the Town of St. Stephen has caused the corporate seal of the said Town to be affixed to this By-Law the 27<sup>th</sup> day of May, 2019.

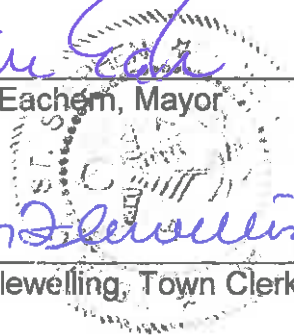
FIRST READING: April 29, 2019

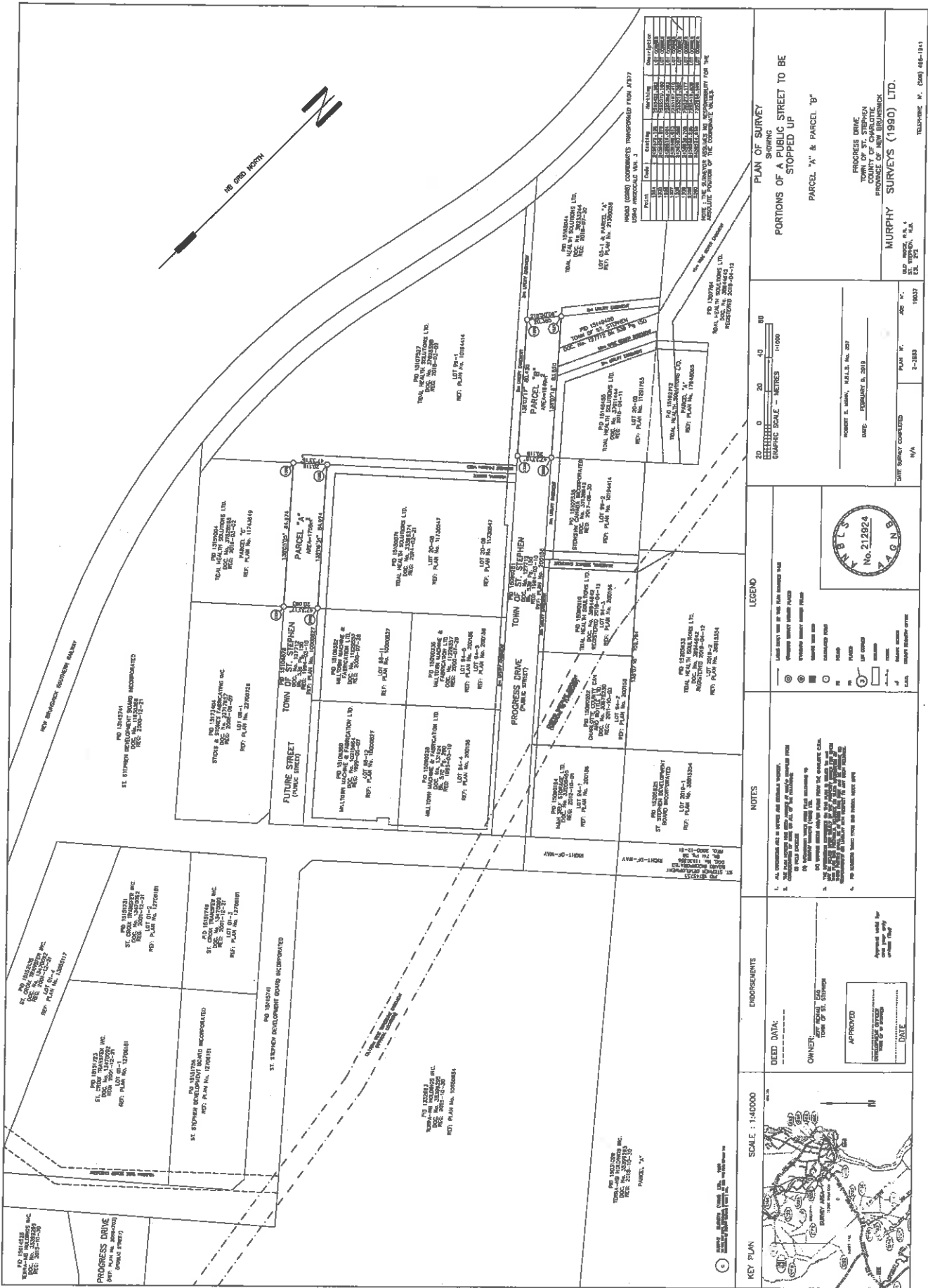
SECOND READING: May 27, 2019

THIRD READING AND ENACTED: May 27, 2019

  
\_\_\_\_\_  
Allan MacEachern, Mayor

  
\_\_\_\_\_  
Joan M. Flewelling, Town Clerk





**TABLE OF COORDINATES**

WORDS (COORDINATES) TRANSPORTED FROM AT377  
using ARCSOFT/ARC/INFO

POINT	Easting	Northing	Zone
1	434973.58	4635291.21	12N
2	434973.58	4635291.21	12N
3	434973.58	4635291.21	12N
4	434973.58	4635291.21	12N
5	434973.58	4635291.21	12N
6	434973.58	4635291.21	12N
7	434973.58	4635291.21	12N
8	434973.58	4635291.21	12N
9	434973.58	4635291.21	12N
10	434973.58	4635291.21	12N
11	434973.58	4635291.21	12N
12	434973.58	4635291.21	12N
13	434973.58	4635291.21	12N
14	434973.58	4635291.21	12N
15	434973.58	4635291.21	12N
16	434973.58	4635291.21	12N
17	434973.58	4635291.21	12N
18	434973.58	4635291.21	12N
19	434973.58	4635291.21	12N
20	434973.58	4635291.21	12N
21	434973.58	4635291.21	12N
22	434973.58	4635291.21	12N
23	434973.58	4635291.21	12N
24	434973.58	4635291.21	12N
25	434973.58	4635291.21	12N
26	434973.58	4635291.21	12N
27	434973.58	4635291.21	12N
28	434973.58	4635291.21	12N
29	434973.58	4635291.21	12N
30	434973.58	4635291.21	12N
31	434973.58	4635291.21	12N
32	434973.58	4635291.21	12N
33	434973.58	4635291.21	12N
34	434973.58	4635291.21	12N
35	434973.58	4635291.21	12N
36	434973.58	4635291.21	12N
37	434973.58	4635291.21	12N
38	434973.58	4635291.21	12N
39	434973.58	4635291.21	12N
40	434973.58	4635291.21	12N
41	434973.58	4635291.21	12N
42	434973.58	4635291.21	12N
43	434973.58	4635291.21	12N
44	434973.58	4635291.21	12N
45	434973.58	4635291.21	12N
46	434973.58	4635291.21	12N
47	434973.58	4635291.21	12N
48	434973.58	4635291.21	12N
49	434973.58	4635291.21	12N
50	434973.58	4635291.21	12N